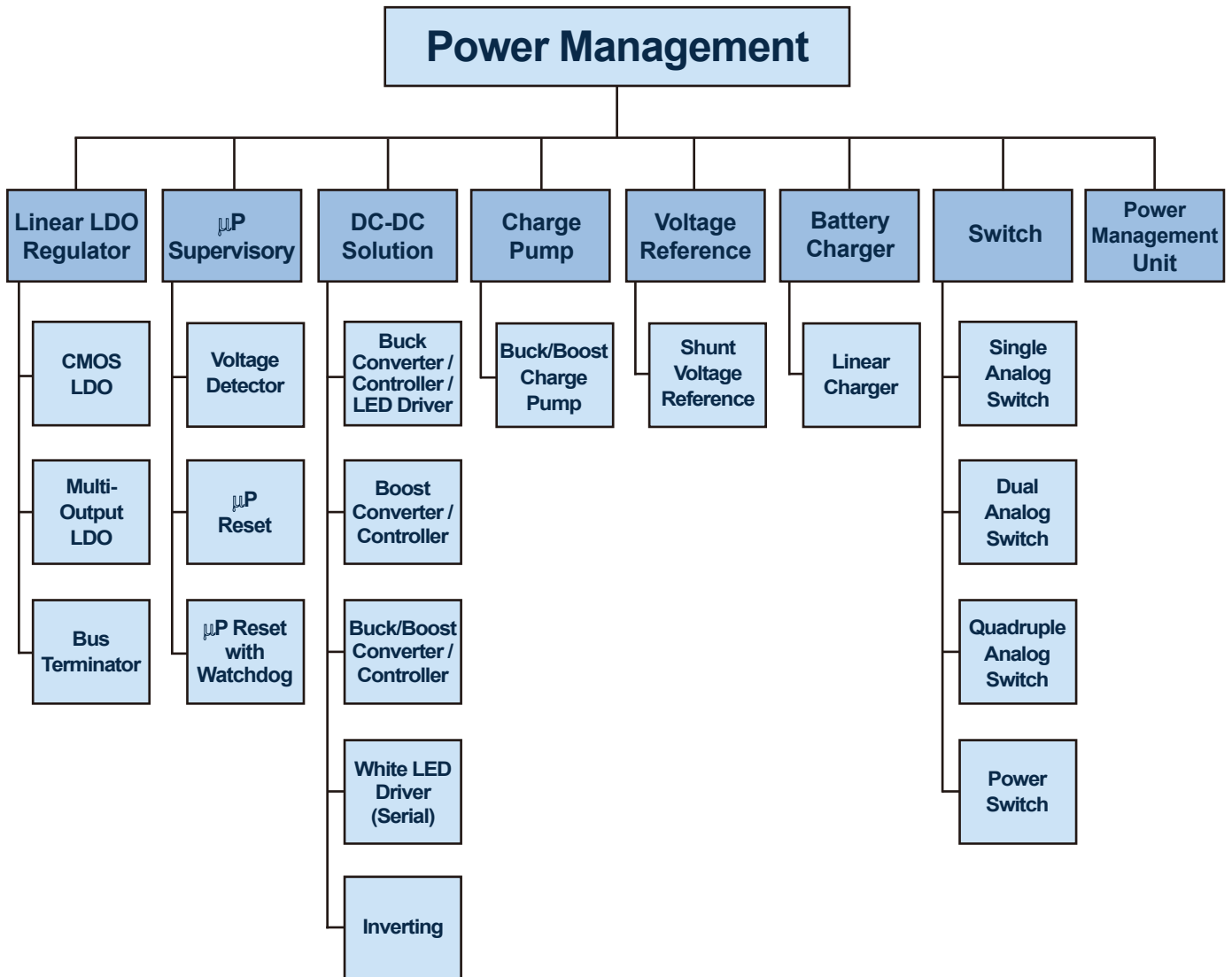


Power Solution Product Portfolio



Single Output CMOS LDO

Product Family	Part Number	Electrical Characteristics					Feature					Package	
		Vin (V) Max.	Vout (V)	Dropout Voltage (V) Max.	I _Q (μA) Typ.	PSRR @1KHz (dB) Typ.	EN	PG	Bypass	SCP ⁽¹⁾	Others		
150mA	AME8831	5.5	Fix: 1.8~3.3	0.3 @ Vout=3.3V, I _{out} =150mA	17	65	EN, ENB					Inrush Current Control	SOT-25, TSOT-25
	AME8833	5.5	Fix: 1.8~3.3 Adj: 1.225 (Typ.)	0.6 @ Vout>=2.0V, I _{out} =150mA	60	70	v			v			SC-70-5, TSOT-25
	AME8834	5.5	Adj: 1.225 (Typ.)	0.6 @ Vout>=2.0V, I _{out} =150mA		70	v			v			SC-70-5, SOT-25, TSOT-25
	★ AME8852	5.5	Fix: 0.8~4.3	0.23 @ Vout>2.8V, I _{out} =150mA	60	60	v						SC-70-4, SC-70-5
	AME8890	6	Fix: 1.2	1.3 @ I _{out} =150mA	55	50	v	v		v			SOT-25, TSOT-25
250mA	AME8821	5.5	Fix: 1.8~3.3	0.6 @ Vout=3.3V, I _{out} =250mA	17	65	EN, ENB					Inrush Current Control	SOT-25, TSOT-25
300mA	AME8800	7	Fix: 1.3~5.0	0.3 @ Vout>2.8V, I _{out} =300mA	30	50				v			SOT-23, SOT-25, SOT-89, TO-92
	AME8811	7	Fix: 1.3~5.0	0.3 @ Vout>2.8V, I _{out} =300mA	30	50				v			SOT-89, TO-92
	AME8801	7	Fix: 1.3~5.0	0.3 @ Vout>2.8V, I _{out} =300mA	30	50	v		v	v	Soft-Start		SOT-25, TSOT-25, SOT-26, TSOT-26
	AME8812	7	Fix: 1.3~5.0	0.3 @ Vout>2.8V, I _{out} =300mA	30	50	v		v	v	Soft-Start		SOT-25, TSOT-25
	AME8840	7	Fix: 1.3~5.0	0.3 @ Vout>2.8V, I _{out} =300mA	30	50	v		v	v	Soft-Start		SOT-25, TSOT-25
	AME8802	7	Fix: 1.3~5.0	0.3 @ Vout>2.8V, I _{out} =300mA	30	50	v	v		v			SOT-25, TSOT-25
	AME8803	7	Fix: 1.3~5.0	0.3 @ Vout>2.8V, I _{out} =300mA	30	50	v	v	v	v	Soft-Start		SOT-26, TSOT-26
	AME8814	7	Fix: 1.3~5.0	0.3 @ Vout>2.8V, I _{out} =300mA	30	50	v		v	v	Soft-Start		SOT-26, TSOT-26
	AME8804	7	Adj: 1.215 (Typ.)	0.3 @ 3.8V>Vout>2.8V, I _{out} =300mA		50	v	v		v			SOT-25, TSOT-25, SOT-26, TSOT-26
	AME8824	7	Adj: 1.2 (Typ.)	0.3 @ 3.8V>Vout>2.8V, I _{out} =300mA		50	v	v		v			SOT-26, TSOT-26
	AME8818	5.5	Fix: 1.2~4.5 Adj: 0.98 (Typ.)	0.33 @ Vout>=3.1V, I _{out} =300mA	70	60	v		v				SOT-23, SOT-25
	AME8839	5.5	Fix: 1.2~4.5	0.35 @ Vout>=3.0V, I _{out} =300mA	120	75	v		v				SOT-25, SC-70-5
	★ AME8853	5.5	Fix: 0.8~4.3	0.3 @ Vout>2.8V, I _{out} =300mA	60	60	v						SOT-25, TSOT-25, SC-70-5
600mA	AME8805	7	Fix: 1.3~5.0	0.6 @ Vout>2.8V, I _{out} =600mA	30	50				v			SOT-23, SOT-89, SOT-223
	AME8810	7	Fix: 1.3~5.0	0.6 @ Vout>2.8V, I _{out} =600mA	30	50				v			SOT-223
	AME8813	7	Fix: 1.3~5.0	0.6 @ Vout>2.8V, I _{out} =600mA	30	50				v			SOT-89

Please consult AME sales office or authorized Rep. /Distributor for product availability.

★ New product, data for reference only.

(1) Short Circuit Protection

Single Output CMOS LDO

Product Family	Part Number	Electrical Characteristics					Feature					Package
		Vin (V) Max.	Vout (V)	Dropout Voltage (V) Max.	I _Q (μA) Typ.	PSRR @1KHz (dB) Typ.	EN	PG	Bypass	SCP ⁽¹⁾	Others	
600mA	AME8806	7	Fix: 1.3~5.0	0.6 @ Vout>2.8V, Iout=600mA	30	75	v		v	v	Soft-Start	SOP-8
	AME8809	7	Fix: 1.3~5.0	0.6 @ Vout>2.8V, Iout=600mA	30	75	v		v	v	Soft-Start	SOP-8
	AME8842	7	Fix: 1.3~5.0	0.6 @ Vout>2.8V, Iout=600mA	30	75	v	v		v		SOP-8
	AME8807	7	Adj: 1.215 (Typ.)	0.6 @ Vout>2.8V, Iout=600mA		50	v			v		SOP-8, DFN-8C (3x3x0.75mm)
	AME8841	7	Fix: 1.3~5.0	0.6 @ Vout>2.8V, Iout=600mA	30	50	v			v		SOP-8
	AME8850	7	Adj: 1.2 (Typ.)	0.6 @ Vout>2.8V, Iout=600mA		50	v			v		SOT-25, TSOT-25, SOP-8, DFN-8C (3x3x0.75mm)
	★ AME8855	5.5	Fix: 0.8~4.3	0.65 @ Vout>2.8V, Iout=600mA	60	60	v					SOP-8, SOT-89, SOT-23, SOT-223
	AME8861	7	Fix: 1.8~3.3	0.6 @ Vout>2.8V, Iout=600mA	30	75	v		v	v	Soft-Start	SOT-25, TSOT-25
	AME8819	5.5	Fix: 1.2~4.5 Adj: 0.98 (Typ.)	0.65 @ Vout>3.3V, Iout=600mA	70	60						SOT-89, SOT-223 SOP-8
	AME8863	6	Fix: 1.5~3.3	0.6 @ Vout>2.8V, Iout=600mA	30	75	v	v		v		SOT-26, TSOT-26
750mA	AME8808	7	Fix: 1.3~5.0	0.6 @ Vout>2.8V, Iout=750mA	30	50				v		SOT-223, TO-252-2
	AME8843	7	Fix: 1.8~2.5	0.75 @ Vout>2.8V, Iout=750mA	30	50				v		SOT-223
	AME8844	7	Fix: 1.5~3.3 Adj: 1.24 (Typ.)	0.5 @ Vout>=2.0V, Iout=750mA	45	75	v	v		v		MSOP-8
800mA	AME8847	7	Fix: 1.8~3.3	0.8 @ Vout>2.8V, Iout=800mA	30	50				v		SOT-89, SOT-223
1A	AME8827	5.5	Fix: 1.2~3.6	0.4 @ Vout>3.1V, Iout=1A	70	60	v			v		TO-252-2, SOT-223 SOP-8
	AME8848	7	Fix: 1.8~3.3	0.8 @ Vout>2.8V, Iout=1A	30	50				v		SOT-223
1.5A	AME8815	7	Fix: 1.5~5.0	0.6 @ Vout>2.8V, Iout=1.5A	45	50				v		SOT-223, TO-263-2, TO-263-3, TO-252-2, TO-220-3
	AME8816	7	Fix: 1.5~5.0 Adj: 1.242 (Typ.)	0.6 @ Vout>2.8V, Iout=1.5A	45	50 / 75	v			v	Soft-Start	SOP-8, TO-263-5
	★ AME8851	5.5	Fix: 1.2~3.3 Adj: 1.0~4.5	0.4 @ Vout>2.8V, Iout=1.5A	70	50	v	v		v	Soft-Start	SOT-223, TO-252-2 TO-220-3, TO-263-2 TO-263-3, TO-263-5 SOP-8 / PP
1.55A	AME8826	7	Fix: 1.5~5.0 Adj: 1.242 (Typ.)	0.6 @ 3.8V>Vout>2.8V, Iout=1.55A	45	50 / 75	v		v	v	Soft-Start	SOP-8, TO-263-5

Please consult AME sales office or authorized Rep. /Distributor for product availability.

★ New product, data for reference only.

(1) Short Circuit Protection

Single Output CMOS LDO

Product Family	Part Number	Electrical Characteristics					Feature					Package
		Vin (V) Max.	Vout (V)	Dropout Voltage (V) Max.	I _Q (μA) Typ.	PSRR @1KHz (dB) Typ.	EN	PG	Bypass	SCP ⁽¹⁾	Others	
3A	AME8845	6	Fix: 1.5~3.3	0.45 @ V _{OUT} >=2.5V, I _{OUT} =3A	300	50					v	SOT-223, TO-252-2 TO-263-3, TO-220-3
	★AME8846	5.5	Fix: 1.05~2.5 Adj: 0.8 (Typ.)	0.25 @ V _{OUT} =1.2, I _{OUT} =3A	600	N / A	v	v				SOP-8, SOP-8/PP

Dual Output CMOS LDO

Product Family	Part Number	Electrical Characteristics					Feature					Package
		Vin (V) Max.	Vout (V)	Dropout Voltage (V) Max.	I _Q (μA) Typ.	PSRR @1KHz (dB) Typ.	EN	PG	Bypass	SCP ⁽¹⁾	Others	
150mA/150mA	AME8755	5.5	Ch1 / Ch2 Fix: 1.2~3.3	0.35V @ V _{OUT} >= 3.0V, I _{OUT} =150mA	70	70	v					SOT-26
	AME8759	5.5	Ch1 / Ch2 Fix: 1.2~3.6	0.36V @ V _{OUT} >= 2.8V, I _{OUT} =150mA	25	70	v					SOT-26

Bus Termination Regulator

Product Family	Part Number	Electrical Characteristics					Functions			Output Capacitor (MLCC)	Package
		I _{OUT} (A) Max.	Vin (V) Max.	Vout (V)	Control Voltage (V)	I _Q (mA) Typ.	OCF	OTP	S3/S5 controls ⁽²⁾		
DDR I / II	AT9173	-2 ~ 2	4	0.9, 1.25	3.3	1.4	v	v			SOP-8, SOP-8/PP
DDR II / III	AME9172	-2 ~ 2	4	0.75, 0.9	3.3 ~ 5.0	1.4	v	v			SOP-8, SOP-8/PP
	AME9172M	-2 ~ 2	3	0.75, 0.9	3.3 ~ 5.0	0.5	v	v		v	SOP-8/PP

Voltage Detector

Product Family	Part Number	Electrical Characteristics			Features					Package
		Vin (V)	V _{TH} (V)	I _Q (μA) Max.	Drive Option	Watch Dog	Manual Reset	Output Delay Time	Active Mode	
Voltage Detector	AME8550	1.2~6.5	1.9~5.0	4	Open Drain or Push Pull			Adj. by External Capacitance	Low	SC-70, SOT-89 SOT-23, TSOT-23 SOT-25, TSOT-25

Charge Pump

Product Family	Part Number	Functional Description	Electrical Characteristics				Features						Package
			Vin (V)	Vout (V)	Efficiency (%) Max.	I _Q (μA) Typ.	EN	Soft Start	OVP	OTP	SCP ⁽¹⁾	UVLO	
Buck / Boost Mode	AME7739	Step-Up / Step-Down 60mA Regulated Charge Pump	3.0~5.5	Fix: 3.3 / 5.0 / 5.5	90	60	v				v	v	SOT-26

Please consult AME sales office or authorized Rep. /Distributor for product availability.

★ New product, data for reference only.

(1) Short Circuit Protection

(2) VTT in high Impedance (suspend to RAM) in S3 and soft-off for VTT and VTTREF in S5

DC-DC Boost Converter

Product Family	Part Number	Functional Description	Electrical Characteristics					Features						Package		
			I _{sw.cl} limit (A) Min.	V _{in} (V)	V _{fb} (V) Typ.	V _{out} (V)	I _Q (μA) Typ.	EN	Soft Start	Current Mode	OVP	OTP	UVLO			
Simple DC-DC Converter	AME5138	Micropower Step-Up DC/DC Converter	0.175	2.0~5.5	1.23	V _{in} ~20	69	v						v	SOT-25, TSOT-25	
	AME5140	1.6MHz Boost Converter With 30V Internal FET Switch	1.2	2.7~5.5	1.23	V _{in} ~30	400	v		v			v	v	SOT-25, TSOT-25, MSOP-8, DFN-8C (3x3x0.75mm)	
	AME5145	1.6MHz Boost Converter With 30V Internal FET Switch	1.2	2.7~5.5	1.23	V _{in} ~30	400	v		v			v	v	SOT-25, TSOT-25, MSOP-8, DFN-8C (3x3x0.75mm)	
	AME5170	Low Cost Micropower Boost DC/DC Converter	0.3	1.5~5.5	1.23	V _{in} ~28	65	v	v					v	SOT-25, TSOT-25	
	AME5170A	Low Cost Micropower Boost DC/DC Converter	0.34	1.5~5.5	1.23	V _{in} ~28	65	v	v					v	SOT-25, TSOT-25	
Inverting	AME5150	Micropower Inverting DC-DC Converter	0.3	1.5~5.5	-1.23	V _{fb} ~-28	65	v	v					v	SOT-25, TSOT-25	
For WLED Driver Application	AME5142	High Efficiency 6 White LED Driver With Open LED Protection	0.65	2.7~5.5	0.15	V _{in} ~25	180	v	v	v	v	v	v	v	SOT-25, TSOT-25, SOT-26, TSOT-26	
	AME5142A	High Efficiency 6 White LED Driver With Open LED Protection	0.65	2.7~5.5	0.104	V _{in} ~25	180	v	v	v	v	v	v	v	SOT-25, TSOT-25, SOT-26, TSOT-26	
	AME5142B	High Efficiency 6 White LED Driver With Open LED Protection	0.65	2.7~5.5	0.104	V _{in} ~25	180	v	v	v	v	v	v	v	SOT-26, TSOT-26	
	AME5142C	High Efficiency 6 White LED Driver With Open LED Protection	0.65	2.8~5.5	0.104	V _{in} ~28	180	v	v	v	v	v	v	v	SOT-26, TSOT-26	
	AME5143	1.4MHz Boost Converter With 30V Internal FET Switch	1.8 (Typ.)	2.7~5.5	1.23	2.7~30	2000	v	v	v			v	v	MSOP-8/PP	
	AME5144	High Efficiency, 37V Step-Up Converters for 2 to 10 White LEDs	0.5	2.6~5.5	0.3	V _{in} ~37	500	v	v	v	v			v	DFN-8C (3x3x0.75mm)	
	★AME5173	High Efficient Synchronous Boost Converter	0.64	0.7~5.5	0.5	1.8~5.0	30	v	v					v	v	SOT-23, SOT-26 DFN-6D (2x2x0.75mm)
	★AME5188	High Voltage Boost Driver With 6 Channels Constant Current Regulator	2.5	4.5~26.0	N/A	V _{in} ~40	6000	v	v	v	v	v	v	v	QFN-20A (4x4x0.75mm)	
	★AME5188A	High Voltage Boost Driver With 8 Channels Constant Current Regulator	2.5	4.5~26.0	N/A	V _{in} ~40	6000	v	v	v	v	v	v	v	QFN-20A (4x4x0.75mm)	

Please consult AME sales office or authorized Rep. /Distributor for product availability.

★ New product, data for reference only.

DC-DC Buck Converter

Product Family	Part Number	Functional Description	Electrical Characteristics					Feature							Package
			Isw.CL limit (A) Min.	Vin (V)	Vfb (V) Typ.	Vout (V)	I _Q (μA) Typ.	EN	Soft Start	Current Mode	Sync.	OVP	OTP	UVLO	
Single-Ch DC-DC Converter	AME5248	1.5MHz, 600mA, Synchronous Buck Converter	1	2.5~5.5	0.6	0.6~Vin-0.2	20	v	v	v	v	v	v	v	SOT-25, TSOT-25
	AME5248A	1.5MHz, 600mA, Synchronous Buck Converter	1	2.5~5.5	0.5	0.5~Vin-0.2	20	v	v	v	v	v	v	v	SOT-25, TSOT-25
	AME5249	1.5MHz, 600mA Synchronous Buck Converter	1	2.5~5.5	0.6	0.6~Vin-0.2	20	v	v	v	v	v	v	v	SOT-25, TSOT-25
	★AME5249A	1.5MHz, 600mA Synchronous Buck Converter	1	2.5~5.5	0.6	0.6~Vin-0.2	20	v	v	v	v	v	v	v	SOT-25, TSOT-25
	AME5258	1.5MHz, 600mA Synchronous Buck Converter	0.75	2.5~5.5	0.6	0.6~Vin-0.2	300	v	v	v	v	v	v	v	SOT-25
	AME5250	1A, 1.5MHz Synchronous Step-Down Converter	1.4	2.5~5.5	0.6	0.6~Vin-0.2	20	v	v	v	v	v	v	v	DFN-6D (2X2X0.75mm) QFN-16C (3x3x0.75mm)
	AME5268	340KHz, 3A, 28V, Synchronous Rectified Buck Converter	4	4.75~28.0	0.925	0.925~25	1300	v	v	v	v	v	v	v	SOP-8/PP
	AME5269	340KHz, 2A, 28V, Synchronous Rectified Buck Converter	2.4	4.75~28.0	0.925	0.925~25	1300	v	v	v	v	v	v	v	SOP-8
	AME5280	4A, 300KHz~1.4MHz Sync Buck Converter	5.3	3~5.5	0.8	0.8~Vin	460	v	v	v	v	v	v	v	SOP-8/PP
	AME5290	3A, 1MHz Sync Buck Converter	3.4	3~5.5	0.8	0.8~Vin	450	v	v	v	v	v	v	v	SOP-8/PP
	AME5291	2A, 1MHz Sync Buck Converter	3.4	3~5.5	0.8	0.8~Vin	450	v	v	v	v	v	v	v	SOP-8
	★AME5231	2A, 28V, 570KHz Synchronous Rectified Step-Down Converter with PFM Mode	2.3	4.5~28	0.8	0.8~25	200	v	v	v	v	v	v	v	SOP-8, SOP-8/PP
★AME5232	3A, 28V, 100KHz~1.5MHz Async Buck Converter	4	4.5~28	0.8	0.8~25	200	v	v	v	v	v	v	v	SOP-8/PP	
Dual-Ch DC-DC Converter	★AME5251	Dual 1A, 1.5MHz Synchronous Step-Down Converter	1.4	2.5~5.5	0.6	0.6~Vin-0.2	35	v	v	v	v	v	v	v	DFN-12A (3x3x0.75mm)
	AME5252	Dual Synchronous 1.5MHz, 600mA, Step-Down DC-DC Converter	0.95	2.5~5.5	0.6	Adj:0.6~5.0	600	v	v	v	v	v	v	v	DFN-10B (3x3x0.75mm)

Please consult AME sales office or authorized Rep. /Distributor for product availability.

★ New product, data for reference only.

Shunt Voltage Reference

Product Family	Part Number	Electrical Characteristics					Package
		Accuracy (%)	Supply Current (mA)	Reference Voltage (V)	Cathode Voltage (V) Max.	Minimum Cathode Current (μ A)	
Shunt Voltage Reference	AME385-1.2	0.5	20	Fix: 1.235		30	TO-92-2, TO-92-3, SOT-23, SOP-8
	AME385-2.5	0.5 / 0.8	20	Fix: 2.5		30	TO-92-2, TO-92-3, SOT-23, SOP-8
	AME40	0.5	20	Fix: 2.5		40	TO-92-2, TO-92-3, SOT-23, SOP-8
	AME4041	0.5	20	1.225		30	SOT-23
	AME41-1.2	0.5	20	Fix: 1.25		30	TO-92-2, TO-92-3, SOT-23, SOP-8
	AME41-ADJ	0.5	20	Adj: 1.25		30	TO-92-3, SOP-8, SOT-23, TSOT-23
	AME431Bxxxxx12	0.5 / 1	100	Adj: 1.24	16	80	TO-92, SOP-8, SOT-89, SOT-23, TSOT-23, SOT-25, TSOT-25
	AME431Bxxxxx25	0.5 / 1	100	Adj: 2.5	36	1000	TO-92, SOP-8, SOT-89, SOT-23, TSOT-23, SOT-25, TSOT-25

μ P Supervisory

Product Family	Part Number	Electrical Characteristics			Features					Package
		Vin (V)	VTH (V)	I _Q (μ A) Max.	Drive Option	Watch Dog	Manual Reset	Output Delay Time	Active Mode	
μ P Supervisory	AME8500	1.0~5.5	1.5~4.63	3	Open Drain or Push Pull			v	High or Low	SOT-89, SOT-23, TSOT-23, SOT-25, TSOT-25,
	★AME8500M	1.0~5.5	1.5~4.63	3	Open Drain or Push Pull			v	High or Low	SOT-89, SOT-23, TSOT-23, SOT-25, TSOT-25,
	AME8510	1.0~5.5	1.5~4.63	10	Open Drain or Push Pull	v	v	v	High or Low	SOT-25, TSOT-25
	AME8520	1.0~5.5	1.5~4.63	10	Open Drain or Push Pull	v		v	High or Low	SOT-25, TSOT-25
	AME8530	1.0~5.5	1.5~4.63	10	Open Drain or Push Pull		v	v	High or Low	SOT-25, TSOT-25
	AME8570	1.0~5.5	1.6~4.63	5	Open Drain or Push Pull		v	v	High or Low	SC-70-3, SC-70-4, SOT-23, TSOT-23, SOT-143
	★AME8570M	1.0~5.5	1.6~4.63	5	Open Drain or Push Pull		v	v	High or Low	SC-70-3, SC-70-4, SOT-23, TSOT-23, SOT-143

Power Sequence Controller

Product Family	Part Number	Functional Description	Features	Package
Power Sequence	ATPA02	AMD K8 Power Sequence controller, Supports DDR ACPI-STR	Under-Voltage Fault Monitor	SOP-16

Please consult AME sales office or authorized Rep. /Distributor for product availability.

★ New product, data for reference only.

(1) Short Circuit Protection

Switch

Product Family	Part Number	Electrical Characteristics					Active Mode	Package
		Functional Description	V _{IN} Range (V)	RDS(ON) (Ohm) Max.	Continuous Current (mA)	Turn On/Off Time (nS) Max.		
Analog Switch	AME4620	1 Ohm Low Voltage SPDT (Small Package)	1.8~5.5	1.2	300	60	Break Before Make	SC-70-6
	AME4621	1 Ohm Low Voltage Dual SPDT	1.8~5.5	1.2	300	60	Break Before Make	DFN-10B (3x3x0.75mm)
	AME4624	1 Ohm Low Voltage SPDT	1.8~5.5	1.2	300	60	Break Before Make	SOT-26, TSOT-26
	AME4625	1 Ohm Low Voltage SPDT	1.8~5.5	1.2	300	60	Make Before Break	SOT-26, TSOT-26
	AS3336G	Precision Multiple Analog Switches	-0.3~15.0	75	20	200	Break Before Make	SSOP-28

By Application

Application		Part Number
Main Board		AME8890, AME8800, AME8811, AME8818, AME8819, AME8824, AME8815, AME431, ATPA02, AME9172, AME9172M, AT9173, AME5268, AME5280, AME5290
Note Book		AME8826, AME8816, AME385, AME40, AME41, AME431B, AME8801, AME8812, AME8840, AME8803, AME8814, AME8800, AME8811, AME8805, AME8810, AME8818, AME8819, AME8813, AME4620, AME4624, AME4625, AME8755, AME8845, AME9172, AME9172M, AT9173, AME5268, AME5280, AME5290
Wireless	IrDA	AME8800, AME8811, AME8818, AME8839, AME8819, AME8840, AME8801, AME8812, AME8831
	Bluetooth	AME8800, AME8811, AME8818, AME8839, AME8819, AME8840, AME8801, AME8812, AME8830, AME8831, AME8805, AME8810, AME8813, AME8806, AME8809, AME8842, AME8841, AME8861, AME8807, AME5170A
	IEEE 802.11x	AME8800, AME8811, AME8818, AME8839, AME8819, AME8840, AME8801, AME8812, AME8831, AME8805, AME8810, AME8813, AME8806, AME8809, AME8842, AME8841, AME8861, AME8807, AME8815, AME8816, AME8845, AME5258, AME5250
PC Card	VGA	AME8801, AME8812, AME8840, AME8800, AME8811, AME8818, AME8819, AME8815, AME8816, AME431B, AME8803, AME8814, AME8804, AME8824, AT9173, AME5268, AME9172M
	LAN	AME8815, AME8805, AME8810, AME8813, AME8806, AME8809, AME8842, AME8800, AME8811, AME8801, AME8812, AME8818, AME8819, AME8840, AME8847, AME5268
LCD Monitor / TV	Interface Board	AME8816, AME8815, AME8826, AME431B, AME8500, AME8570, AME8843, AME8844, AME8847, AME5258, AME5248, AME5249, AME5252, AME5267, AME9172, AME9172M, AT9173, AME5268, AME5280, AME5290
PC Peripherals	XDSL Modem	AME8815, AME8816, AME8500, AME8570, AME8550, AME8826, AME5248, AME5249, AME5252, AME5250, AME5267, AME5268
	Cable Modem	AME8815, AME8816, AME8500, AME8570, AME8550, AME8826, AME5248, AME5249, AME5252, AME5267, AME5268
	Switch Hub	AME8815, AME8845, AME8816, AME8826, AME5248, AME5249, AME5252, AME5267, AME5268
Portable devices	PDA	AME8800, AME8811, AME8801, AME8812, AME8840, AME8802, AME8803, AME8814, AME8804, AME8824, AME8805, AME8810, AME8813, AME8806, AME8809, AME8818, AME8839, AME8819, AME8842, AME8807, AME8841, AME8861, AME8863, AME8831, AME8500, AME8570, AME8550, AME4620, AME4624, AME4625, AME5140, AME5142, AME5144, AME5142A, AME5142B, AME5142C, AME5258, AME5250, AME5170A, AME9172M
	DSC	AME8800, AME8811, AME8801, AME8812, AME8840, AME8802, AME8803, AME8814, AME8804, AME8824, AME8805, AME8810, AME8813, AME8806, AME8809, AME8818, AME8839, AME8819, AME8842, AME8807, AME8841, AME8861, AME8863, AME8831, AME8838, AME8500, AME8570, AME8550, AME5140, AME5144, AME5142, AME7739, AME5142A, AME5142B, AME5142C, AME5170A
	Pen Drive	AME8800, AME8811, AME8801, AME8812, AME8849, AME8802, AME8803, AME8814, AME8804, AME8805, AME8818, AME8839, AME8819, AME8810, AME8813, AME8806, AME8809, AME8842, AME8861, AME8863, AME8841, AME8500, AME8570, AME5170A
	MP3	AME8800, AME8811, AME8801, AME8818, AME8839, AME8819, AME8812, AME8849, AME8802, AME8803, AME8814, AME8804, AME8805, AME8810, AME8813, AME8806, AME8809, AME8842, AME8861, AME8863, AME8841, AME8500, AME8570, AME5140, AME5142, AME5142A, AME5142B, AME5142C, AME5144, AME4620, AME4624, AME4625, AME5258, AME5250, AME5170A
	Cellular Phone	AME8800, AME8811, AME8801, AME8812, AME8818, AME8839, AME8819, AME8840, AME8802, AME8803, AME8814, AME8804, AME8824, AME8805, AME8810, AME8813, AME8806, AME8809, AME8842, AME8807, AME8841, AME8861, AME8863, AME8831, AME8500, AME8570, AME8550, AME4620, AME4624, AME4625, AME5140, AME5142, AME5144, AME5142A, AME5142B, AME5142C, AME7739, AME5250, AME5170A
CD/DVD-ROM/RW		AME8800, AME8811, AME8801, AME8812, AME8840, AME8802, AME8803, AME8814, AME8804, AME8824, AME8805, AME8818, AME8819, AME8810, AME8813, AME8806, AME8809, AME8842, AME8807, AME8841, AME8861, AME8863, AME8500, AME8570, AME8550, AME8847, AME8815, AME8816, AME8826, AME8847, AME5258
STB		AME8805, AME8819, AME8810, AME8813, AME8806, AME8809, AME8842, AME8807, AME8841, AME8861, AME8863, AME8500, AME8510, AME8520, AME8530, AME8570, AME8550, AME8847, AME8815, AME8816, AME8826, AME8847, AME5258, AME5248, AME5249, AME5252, AME5267, AME9172, AME9172M, AT9173, AME5268